



GABAA Rα4 Polyclonal Antibody

Catalog No	YP-Ab-16415
Isotype	IgG
Reactivity	Human;Mouse;Rat
Applications	WB;ELISA
Gene Name	GABRA4
Protein Name	Gamma-aminobutyric acid receptor subunit alpha-4
Immunogen	The antiserum was produced against synthesized peptide derived from human GABRA4. AA range:81-130
Specificity	GABAA Rα4 Polyclonal Antibody detects endogenous levels of GABAA Rα4 protein.
Formulation	Liquid in PBS containing 50% glycerol, 0.5% BSA and 0.02% sodium azide.
Source	Polyclonal, Rabbit,IgG
Purification	The antibody was affinity-purified from rabbit antiserum by affinity-chromatography using epitope-specific immunogen.
Dilution	Western Blot: 1/500 - 1/2000. ELISA: 1/40000. Not yet tested in other applications.
Concentration	1 mg/ml
Purity	≥90%
Storage Stability	-20°C/1 year
Synonyms	GABRA4; Gamma-aminobutyric acid receptor subunit alpha-4; GABA(A) receptor subunit alpha-4
Observed Band	60kD
Cell Pathway	Cell junction, synapse, postsynaptic cell membrane; Multi-pass membrane protein. Cell membrane; Multi-pass membrane protein.
Tissue Specificity	Brain,Brain cortex,
Function	function:GABA, the major inhibitory neurotransmitter in the vertebrate brain, mediates neuronal inhibition by binding to the GABA/benzodiazepine receptor and opening an integral chloride channel.,induction:The alpha4 beta2 gamma 2L receptor is not repressed by diazepam.,online information:Forbidden fruit - Issue 56 of March 2005,similarity:Belongs to the ligand-gated ionic channel (TC 1.A.9) family.,subunit:Generally pentameric. There are five types of GABA(A) receptor chains: alpha, beta, gamma, delta, and rho.,
Background	Gamma-aminobutyric acid (GABA) is the major inhibitory neurotransmitter in the mammalian brain where it acts at GABA-A receptors, which are ligand-gated chloride channels. Chloride conductance of these channels can be modulated by agents such as benzodiazepines that bind to the GABA-A receptor. At least 16 distinct subunits of GABA-A receptors have been identified. This gene encodes subunit alpha-4, which is involved in the etiology of autism and eventually



increases autism risk through interaction with another subunit, gamma-aminobutyric acid receptor beta-1 (GABRB1). Alternatively spliced transcript variants encoding different isoforms have been found in this gene.[provided by RefSeq, Feb 2011],

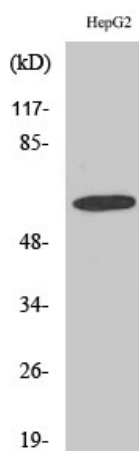
matters needing attention

Avoid repeated freezing and thawing!

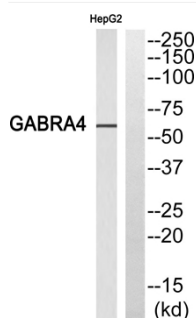
Usage suggestions

This product can be used in immunological reaction related experiments. For more information, please consult technical personnel.

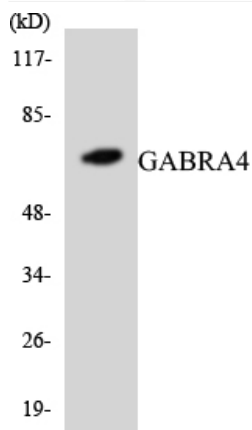
Products Images



Western Blot analysis of various cells using GABAA Rα4 Polyclonal Antibody diluted at 1:1000



Western blot analysis of GABRA4 Antibody. The lane on the right is blocked with the GABRA4 peptide.



Western blot analysis of the lysates from COLO205 cells using GABRA4 antibody.